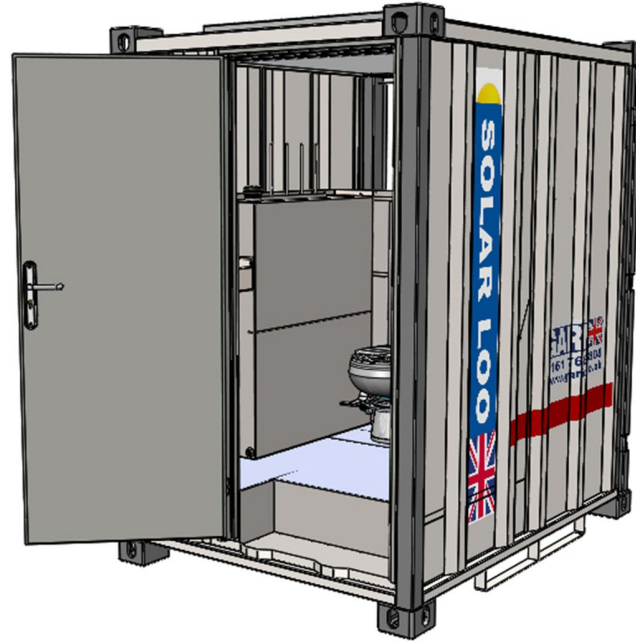


8 X 5 Solar Shower



Standard Specification:	Size/Model		
Size (feet)	8x5 (Single Loo)	21x9 (2+1)	24x9 (2+2)
Patented Solar powered (Eco Series +)	●	●	●
Secure steel construction (corrugated profile)	●	·	·
Secure Steel construction (flat Profile)	·	●	●
Kirncroft 10 point anti-vandal door	●	●	●
External Rain shrouds	●	●	●
60mm Rockwool insulation	●	●	●
Eco Board internal Lining to all walls.	●	●	●
PIR lighting	●	●	●
Low level lifting points	●	●	●
Fork pockets	●	●	●
Back up generator (Pure 12v)	Not Required	●	●
Diesel Heating system	●	●	●
Hot water	●	●	●
Regulation Forearm Sink	●	●	●
Urinal	●	●	●
Eco flush, fresh water flushing WC	●	●	●
Auto frost protection	●	●	●

Optional Extras Available:	Available on	
Size (feet)	8x8 (single)	24x9 (3 bay)
Upgrade - flame proof	●	●
Upgrade - blast proof	●	●
Upgrade - building regs	●	●
Upgrade - Split cabins		●
Stacking kits		●
External steps single tier	●	●
Corporate paint spec. (single or multi-colour)	●	●
Upgrade - mains connection (waste/water/electrics)	●	●



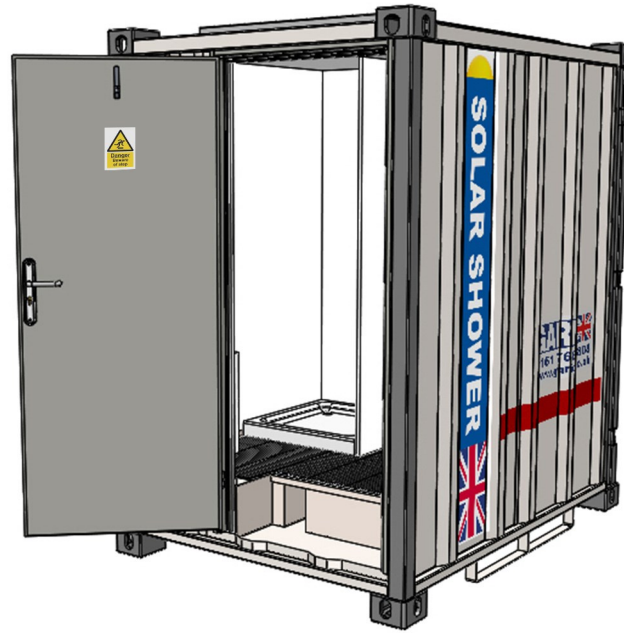
FOR SALE & FOR HIRE

Kingfisher Park, Aviation Road, Pilsworth, Bury, Lancashire BL9 8GD
 T 0161 766 8808 F 0161 766 8809
 Sales E salesteam@garic.co.uk Hire E hireteam@garic.co.uk
www.garic.co.uk

Solar Shower Eco Series +



8 X 5 Solar Shower



Standard Specification:	Size/Model	
Size (feet)	8x5 (Single)	24x9 (3 bay)
Patented solar powered (E Series)	●	●
Secure steel construction (corrugated profile)	●	
Secure Steel construction (flat profile)		●
Kirncroft 10 point anti-vandal door	●	●
External rain shrouds	●	●
60mm Rockwool insulation	●	●
Eco Board internal lining to all walls	●	●
PIR lighting	●	●
Low level lifting points	●	●
Fork pockets	●	●
Back up generator (pure 12v)	Not Required	●
Diesel heating system	●	●
Hot water (shower)	●	●
Seating/ changing area	●	●
Mains connection (waste/water/electrics)		●
Auto-frost protection	●	●

Optional Extras Available:	Available on	
Size (feet)	8x8 (single)	24x9 (3 bay)
Upgrade - flame proof	●	●
Upgrade - blast proof	●	●
Upgrade - building regs	●	●
Upgrade - split cabins		●
Stacking kits		●
External steps single tier	●	●
Corporate paint spec. (single or multi-colour)	●	●
Upgrade - mains connection (waste/water/electrics)	●	●



FOR SALE & FOR HIRE

Kingfisher Park, Aviation Road, Pilsworth, Bury, Lancashire BL9 8GD

T 0161 766 8808 F 0161 766 8809

Sales E salesteam@garic.co.uk Hire E hireteam@garic.co.uk

www.garic.co.uk