

## Case Study



---

# Lancashire County Council Microgrid

---

Energy Solution





# Microgrid

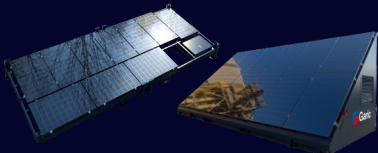
## Thinking Beyond the Box

Microgrid is a custom energy solution tailored to your site's needs. By prioritising solar energy, it reduces emissions and cuts down on fossil fuel reliance. Proven to lower both your emissions and costs, backed by real data from real customers.

# Microgrid

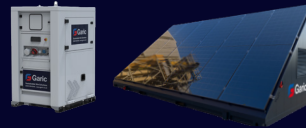
Capture solar energy. Store it. Supply it.  
That's how simple Microgrid is.

**1** Capture  
Energy



With our solar power frame or  
Solar energy store

**2** Store  
Energy



With our Battery energy  
store or Solar energy store

**3** Supply

Units on grid are  
supplied with energy



With our range of welfare and  
accommodation solutions



Saving fuel and  
reducing costs



Providing the lowest  
carbon footprint



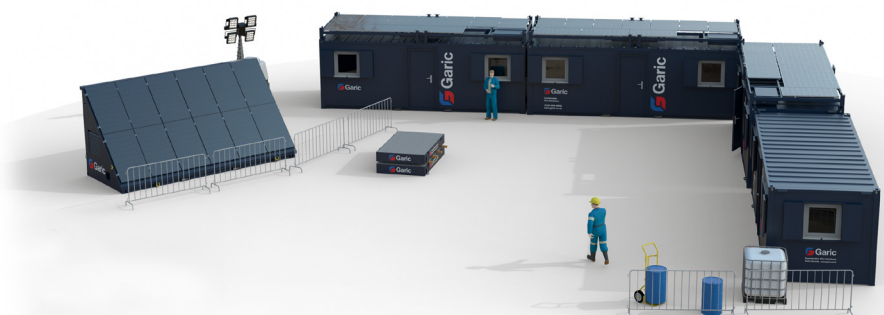
Scalable energy  
power solution

Microgrid is a scalable energy power solution built with sustainability in mind. Using a combination of Solar Power Frames, a Battery Energy Store, or a Solar Energy Store, Microgrid can power enough units to support a 60-person site with just three pieces of equipment.

And with the addition of additional batteries and an efficient backup generator, Microgrid can be scaled to support any size of site, all while driving down emissions, eliminating noise pollution and reducing your fuel costs.

With Microgrid, sustainable, renewable energy is always available, wherever your site's located.

Microgrid - real stand  
out performance...  
with **no compromise** in  
energy performance.



For sustainable site solutions, call our team on  
**0330 094 8061 | [info@garic.co.uk](mailto:info@garic.co.uk) | [garic.co.uk](http://garic.co.uk)**



### Project Name:

Lancashire County Council



### Sector:

Highways



### Project Location:

Clitheroe



### Timescale:

April - August 2024

## Requirement / Project

Refurbishment of public highways and paving in and around Clitheroe town centre. LCC required an alternative solution for power on site to reduce noise and CO2 pollution.

## Solution

- Various Accommodation 24 units, including Office, Canteen, Meeting Room and drying Room.
- 12'x9' 2+1 Toilet Block + waste tank, water tank and steps.

2 x Solar Power Frames

1 x Battery Energy Store

1 x 60KVA Back-up Generator

## Why They Chose Garic

Garics Eco products were perfect for this as the location of the project was a Pay and Display Car park in the town centre of Clitheroe surrounded by residential buildings, shops and bars etc.

Eco products were used:

1. To reduce Carbon Emissions
2. To reduce site running costs ie fuel.
3. To reduce noise pollution from site in the residential area.

“We are very impressed with the service from start to finish. The Regional Account Manager was very good and advised we try the solar panels, this proved to be very **cost effective** with us using much less fuel and also good for our carbon footprint. All the emptying of the tanks and refills were very **efficient** and on time. A very good service all round.”



For sustainable site solutions, call our team on  
**0330 094 8061 | [info@garic.co.uk](mailto:info@garic.co.uk) | [garic.co.uk](http://garic.co.uk)**



### Customer Site Summary

Customer	Lancashire County
Plant Number	34060
Location	Clitheroe
Total Days on Site	86

### Comparison rates

Select Battery	Powr2 45/60
Select Generator	60kva
Select Fuel Rate	£1.50
Select Site Hours	24

### 2024 Project Use Totals

### 60kva (24hrs)

### Live Results

Generator Run Time (Hrs)	2064.00	48.53
Average Fuel Consumption (40%)	12020.74	282.66
Average Emissions (kg/co2)	30773/08	723.60
Average Fuel Costs (£) @ £1.5	£18,031.10	£423.99
Total Costs (Hire & Fuel £)	£19,628.25	£12,771.13



**How we helped  
Lancashire Council  
operate more  
sustainably...**

Financial Savings %  
Vs 24hr Gen

**35%**

Emission Savings %  
Vs 24hr Gen

**98%**

Average Savings

**£6,857.12**

**Using our Microgrid  
System**





For sustainable site solutions,  
call our team on

**0330 094 8061**

**info@garic.co.uk**

---

Kingfisher Park, Aviation Road Pilsworth,  
Bury, BL9 8GD

**0330 094 8061 | info@garic.co.uk**

**garic.co.uk**

---

